



Thermo Scientific

GRAMS Envision

Version 2.1

Installation Guide

© 2013 Thermo Fisher Scientific Inc. All rights reserved.

Thermo Fisher Scientific Inc. provides this document to its customers with a product purchase to use in the product operation. This document is copyright protected and any reproduction of the whole or any part of this document is strictly prohibited, except with the written authorization of Thermo Fisher Scientific Inc.

The contents of this document are subject to change without notice. All technical information in this document is for reference purposes only. System configurations and specifications in this document supersede all previous information received by the purchaser.

Thermo Fisher Scientific Inc. makes no representations that this document is complete, accurate or error-free and assumes no responsibility and will not be liable for any errors, omissions, damage or loss that might result from any use of this document, even if the information in the document is followed properly.

This document is not part of any sales contract between Thermo Fisher Scientific Inc. and a purchaser. This document shall in no way govern or modify any Terms and Conditions of Sale, which Terms and Conditions of Sale shall govern all conflicting information between the two documents.

All trademarks recognized.

Contacting Us

There are several ways to contact Thermo Fisher Scientific for the information you need.

To contact Technical Support

Email support.informatics@thermofisher.com

Web <http://support.thermoinformatics.com/contact>

To contact Customer Service for ordering information

Web <http://www.thermoscientific.com/informatics>

To suggest changes or provide feedback on the documentation

Send an e-mail message to the Informatics Documentation Manager:

sidinf.documentation@thermofisher.com

Notes

Contents

1.	Introduction	1
	System Requirements	2
	Hardware	2
	Software	2
	Before Installation	3
2.	Installing Envision	5
	Upgrading Envision	8
3.	Installing the GRAMS Converters	9
4.	Licensing Envision.....	13
	Requesting an Envision License.....	14
	Selecting an Envision License.....	17
	Specifying a License File.....	18
	Specifying a License Server	19
	Licensing the GRAMS Converters	20
5.	Maintaining Envision.....	21
	Repairing the Envision Installation	22
	Uninstalling Envision.....	24
	Repairing the GRAMS Converters.....	26
	Uninstalling the GRAMS Converters.....	27

Notes

1. Introduction

GRAMS Envision (hereafter referred to as Envision) should be installed by a system administrator if it is to be run over a network, or by an authorized user if it is to be installed on a single computer.

This manual contains instructions for:

- Installing Envision
- Installing the GRAMS converters
- Requesting an Envision license
- Maintaining Envision and the GRAMS converters

Before starting to install Envision, ensure that you are familiar with the application's hardware and software requirements, and that you have read the section [Before Installation](#).

System Requirements

This section describes the hardware and software requirements for the installation of Envision.

Hardware

Envision has the following hardware requirements:

Item	Description
Processor	600 MHz or above.
RAM	512 MB or higher.
Display Resolution	1024 × 768 with 256 colors or better.
Storage	The full Envision installation requires 20 MB of disk space, with a further 50 MB for the instrument converters. The Microsoft .NET Framework redistributable requires a further 200 MB and is downloaded automatically, if required, by the Envision installer.

Software

Envision has been tested on the following operating systems:

- Microsoft Windows 7 64-bit
- Microsoft Windows 7 32-bit
- Microsoft Windows XP Professional

Before Installation Prior to installing Envision:

- Close all programs to ensure that files are updated properly.
- If you are installing Envision on a network, verify that you have administrator privileges. If you are installing Envision on a single (stand-alone) computer, make sure that you have sufficient user permissions.
- If you are using runtime anti-virus software such as Microsoft Security Essentials or Symantec Norton AntiVirus, we recommend that you turn it off before installing Envision.

Notes

2. Installing Envision

Before installing Envision, read the introductory chapter of this manual.

Envision is installed from the GRAMS Envision installation kit:

1. Locate and run **EnvisionInstall.exe**.

Depending on your security settings, one or more security warnings or confirmation dialog boxes may appear.

2. Click **Setup** to continue the installation.

Note If an internet security warning appears, it should indicate that the Publisher of the installation executable is Thermo Fisher Scientific. ▲

3. The Envision GAML Viewer InstallShield Wizard appears:

- a. **Welcome**

This screen appears when the wizard is ready to start the installation. Click **Next** to continue.

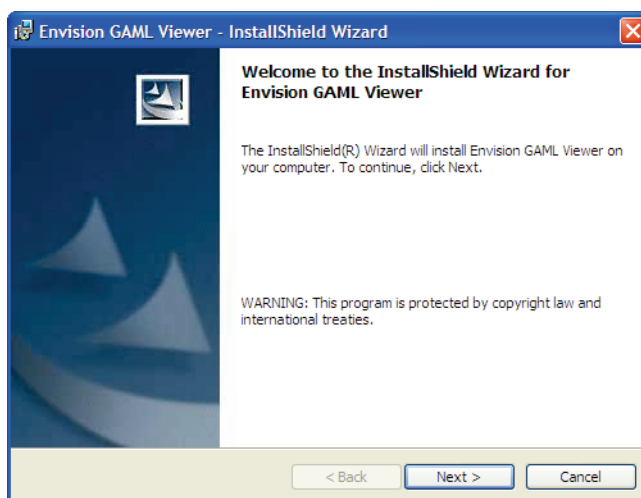


Figure 1-1. Envision GAML Viewer InstallShield Wizard — Welcome Screen

b. **License Agreement**

Read and accept the terms of the license agreement, and then click **Next** to continue.

Click **Print** if you would like to print the license agreement.

c. **Destination Folder**

Specify an installation folder for Envision. You can accept the default installation folder, or click **Change** to select a different folder.

Click **Next** to continue.

d. **Ready to Install the Program**

At this point, the wizard has all the information it needs to proceed with the installation.

Click **Install** to continue with the installation, or click **Back** if you want to make any changes to your selections.

Note A User Account Control dialog box may appear, requesting permission to continue with the installation. Check the details in the dialog box, and click **Continue**.



e. **Installing Envision GAML Viewer**

This screen includes a progress bar, indicating the progress of the installation.

f. **InstallShield Wizard Completed**

Click **Finish** to complete the Envision installation.

g. **Install GRAMS Shell Extension Handlers**

On Windows 7 and Vista operating systems, the installation of the GRAMS Shell Extension handlers begins automatically after you click **Finish** in the Envision InstallShield Wizard window. Shell handlers provide thumbnail previews of GAML and other data files when you use the Windows Explorer to browse for files. Click **Next** to continue installing the shell handlers, or click **Cancel** to exit without installing them.

When you continue with the shell handlers installation,

you need to accept the terms of the license agreement, before the installer can progress. Also, accept any prompts from the installer to install additional components that may not be present on your computer.

When the installation of the shell handlers is complete, click **Finish** to close the installer.

You are now ready to license Envision. See this manual's *Licensing Envision* chapter for more details.

Before using Envision, you should install the latest version of the GRAMS Converters package. See this manual's *Installing the GRAMS Converters* chapter for instructions.

Upgrading Envision

To upgrade from a previous version of Envision:

1. Back up any important data, and then uninstall the old version of Envision.

You can use either the Windows Control Panel's Add or Remove Programs application, or the Envision Setup Wizard.

2. Check that the Envision program folder has been removed.

By default, Envision is installed in the following location:

`C:\Program Files\Thermo\Envision`

If this folder has not been removed, you should remove it manually.

3. Install the new version of Envision, as described in the previous section.

3. Installing the GRAMS Converters

Once you have installed Envision, you can install the latest version of the GRAMS instrument data file converters.

Note If you have an older version of the GRAMS converters installed, you need to uninstall it before attempting to install the latest version. ▲

The Envision installation kit includes an installation package for the GRAMS converters:

1. Locate and run **GRAMS Converters Package.msi**.

Depending on your security settings, one or more security warnings or confirmation dialog boxes may appear.

2. The GRAMS Converters Package InstallShield Wizard opens.

- a. **Welcome**

This screen appears when the wizard is ready to start the installation. Click **Next** to continue.

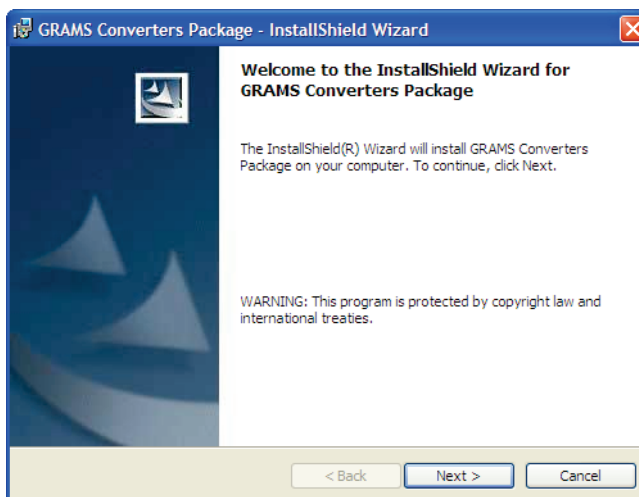


Figure 3-1. GRAMS Converters Package Setup Wizard — Welcome Screen

b. **License Agreement**

Read and accept the terms of the license agreement, and then click **Next** to continue.

Click **Print** if you would like to print the license agreement.

c. **Ready to Install the Program**

At this point, the wizard has the information it requires for installation.

Click **Install** to continue with the installation, or click **Back** if you want to make any changes to your selections.

Note A User Account Control dialog box may appear, requesting permission to continue with the installation. Check the details in the dialog box, and click **Continue**.



d. **Installing GRAMS Converters Package**

This screen includes a progress bar, indicating the progress of the installation.

e. **Installation Wizard Completed**

Click **Finish** to close the wizard.

3. After installation is complete, you may need to restart your computer in order for the GRAMS Converters to work properly. Click **Yes** to restart immediately or **No** to restart later.

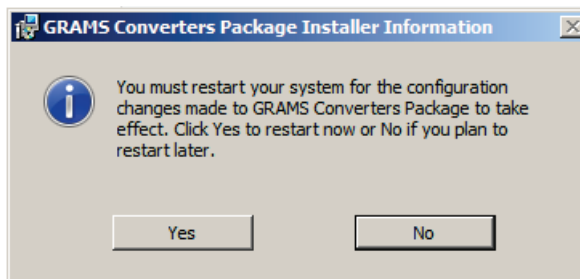


Figure 3-2. Restart Now or Later dialog box

Notes

4. Licensing Envision

Envision is protected by the Macrovision FLEXnet security system. This encodes a license to a specific machine using a unique MAC address from one of its network adapters.

Envision can use two types of licensing:

- File-based: Envision checks a specified license file for valid license details.
- Server-based: Envision queries a license server for valid license details.

Server-based licensing requires a Thermo Licensing Server installation, either on your local computer or on a network computer. Refer to the Thermo Licensing Server user documentation.

The instructions in this chapter describe the following processes:

- Requesting a license for Envision.
- Selecting an existing license to use with Envision.
- Licensing the GRAMS converters.

Note Until you have a valid license, you can only run Envision in Demo Mode. In this mode, you can open and view GAML files, but many Envision features are disabled. ▲

Requesting an Envision License

If you do not have a license for Envision, you must request one from Thermo Fisher Scientific. To do this, you need to provide certain information.

To request a license:

1. Start Envision by selecting **All Programs > Thermo GRAMS Suite > Envision** from the Windows **Start** menu.

If you are running Envision for the first time, the Select License dialog box appears:

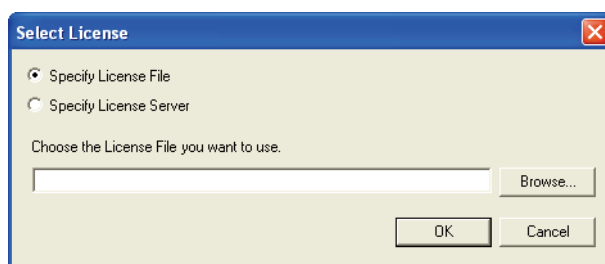


Figure 4-1. Select License dialog box

2. If you do not have a valid license file or server, click **Cancel** to close this dialog box.

Note If you already have a valid license file or server, specify it now. See [Selecting an Envision License](#). ▲

A License Failure message appears:

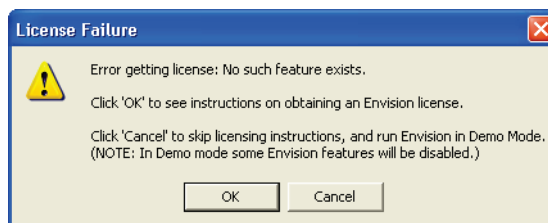


Figure 4-2. License Failure message

3. Click **OK** to continue.

The Request License window appears:

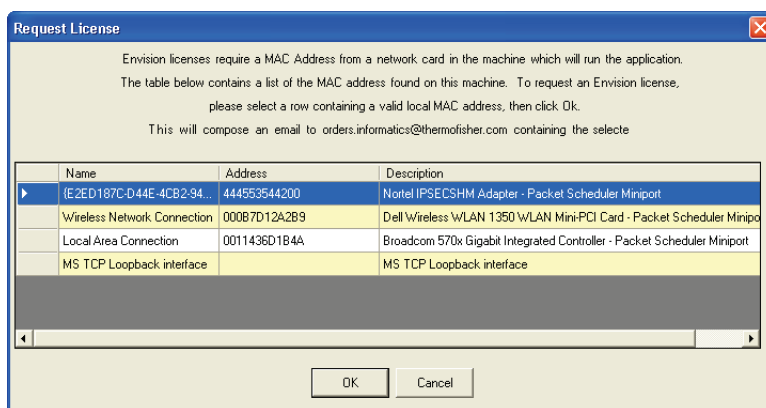


Figure 4-3. Request License Window

The Request License window contains a list of network adapters on your computer, along with their MAC addresses.

4. Follow the instructions in the Request License window to select a network adapter (and its MAC address), and then click **OK**.

Note It is important that you select a permanent physical network adapter, for example, your Local Area Connection, as the license is linked to its MAC address. ▲

Your e-mail client opens automatically, with an e-mail pre-populated with the required details.

Note Envision also opens, in Demo Mode. ▲

5. Edit the e-mail as needed, and click your e-mail client's **Send** button (or equivalent) to send the request.

Thermo Fisher Scientific will use your details to generate a license file and send it to you.

Once you have received your license file, you need to save it on your computer and then select it for use by Envision. See [Selecting an Envision License](#).

Further instructions for licensing Envision are supplied when your license is issued.

Selecting an Envision License

If you have a valid license for Envision, or if you have just received a license, you need to select it for use with Envision.

To select a license:

1. Start Envision, and select **Help > About GRAMS Envision** from the main menu.

The About GRAMS Envision dialog box appears:

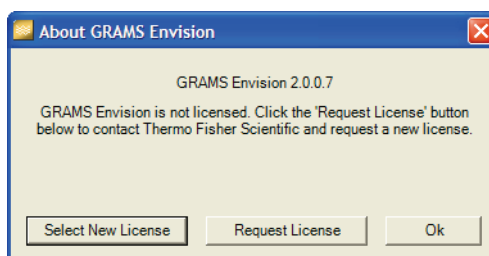


Figure 4-4. About GRAMS Envision dialog box

2. Click **Select New License**.

The Select License dialog box appears:

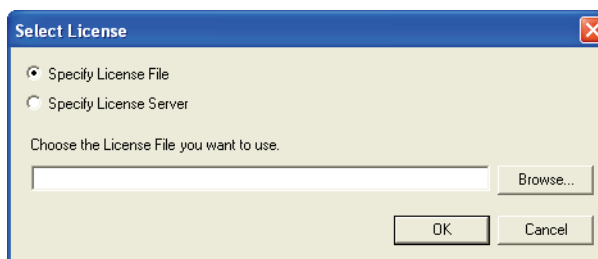


Figure 4-5. Select License dialog box

Note If you have never selected a valid Envision license, this dialog box also appears when you start Envision. ▲

3. Specify either a valid license file, or a license server that has been set up to use your Envision license.

See the [Specifying a License File](#) and [Specifying a License Server](#) sections, if needed, for assistance with this step.

4. Once you have specified your license file or server and clicked **OK** in the Select License dialog box, a “Successfully updated license file” message appears.

Click the message’s **OK** button to return to Envision.

Specifying a License File

To specify a license file:

1. In the Select License dialog box, select **Specify License File**.
2. If you have not already done so, save your license file to a suitable location, for example, your Envision program folder.

The license file has the extension .lic, and is typically named Envision.lic.

3. Use the **Browse** button to locate the license file.

The file path and file name appear in the Choose the License File field.

4. Click **OK**.

Specifying a License Server

To specify a license server:

1. In the Select License dialog box, select **Specify License Server**.
2. If you have not already done so, set up your license server to use your Envision license:

You typically need to copy a server-based Envision license file to your license server, and then set up that server's instance of the Thermo Licensing Server to use it. Refer to the Thermo Licensing Server user documentation.

3. In the Enter the Computer Name field, enter the network name of your license server, for example, "licenseserver01."
4. Click **OK**.

Licensing the GRAMS Converters

For most Envision users, the GRAMS converters do not require separate licensing.

If your system has specific licensing needs, or requires certain converters, you may need to install separate license files (in addition to your Envision license file).

Contact Thermo Fisher Scientific for more details. Further instructions for licensing your converters are supplied when your license is issued.

5. Maintaining Envision

This chapter provides information about maintaining Envision and the GRAMS Converters.

This chapter contains the following sections:

- Repairing the Envision installation
- Uninstalling Envision
- Repairing the GRAMS converters
- Uninstalling the GRAMS converters

Repairing the Envision Installation

If you run the Envision InstallShield Wizard on a computer where Envision has already been installed successfully, you can use the **Repair** option to reinstall all the Envision files.

To repair an Envision installation:

1. From the GRAMS Envision installation kit, locate and run **EnvisionInstall.exe**.

Depending on your security settings, one or more security warnings or confirmation dialog boxes may appear.

2. The Envision GAML Viewer InstallShield Wizard opens:
 - a. **Preparing to Install**
While the installation package is being prepared, a progress bar is visible.
 - b. **Welcome**
This screen appears when the wizard is ready to start the installation. Click **Next** to continue.
 - c. **Program Maintenance**
Select **Repair**, and click **Next** to continue.

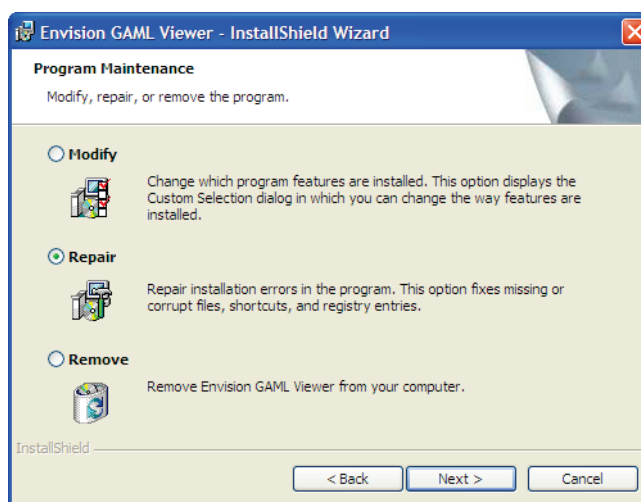


Figure 5-1. Envision GAML Viewer InstallShield Wizard — Program Maintenance Screen

d. **Ready to Repair the Program**

At this point, the wizard has the information it needs to proceed with the repair. Click **Install** to repair your Envision installation.

e. **Installing Envision GAML Viewer**

This screen includes a progress bar, indicating the progress of the installation.

f. **InstallShield Wizard Completed**

Click **Finish** to close the wizard.

g. **GRAMS Shell Extension Handlers**

On Windows 7 and Vista operating systems, the installation wizard for the GRAMS Shell Extension handlers begins automatically after you click **Finish** in the Envision InstallShield Wizard window. On the Program Maintenance page of the wizard, select **Repair** as you did for Envision in step c. Follow the remaining prompts until you reach the InstallShield Wizard Completed page, and click **Finish**.

Uninstalling Envision

You can remove Envision from your computer by running the Envision InstallShield Wizard and selecting the **Remove** option.

To uninstall Envision:

1. From the GRAMS Envision installation kit, locate and run **EnvisionInstall.exe**.

Depending on your security settings, one or more security warnings or confirmation dialog boxes may appear.

Note You can also uninstall Envision from the Windows Control Panel's Add or Remove Programs utility. This method removes the application without opening the Envision InstallShield Wizard. ▲

2. The Envision GAML Viewer InstallShield Wizard opens:
 - a. **Preparing to Install**
While the installation package is being prepared, a progress bar is visible.
 - b. **Welcome**
This screen appears when the wizard is ready to start the installation. Click **Next** to continue.
 - c. **Program Maintenance**
Select **Remove**, and click **Next** to continue.
 - d. **Remove the Program**
At this point, the wizard has all the information it needs to proceed with removing Envision. Click **Remove** to uninstall Envision.

e. **Uninstalling Envision GAML Viewer**

This screen includes a progress bar, indicating the progress of the uninstallation process.

Note Clicking **Cancel** stops the uninstall request, and returns your Envision installation to its original state. ▲

f. **InstallShield Wizard Completed**

Click **Finish** to close the wizard.

g. **GRAMS Shell Extension Handlers**

On Windows 7 and Vista operating systems, the installation wizard for the GRAMS Shell Extension handlers begins automatically after you click **Finish** in the Envision InstallShield Wizard window. On the Program Maintenance page of the wizard, select **Remove** as you did for Envision in step c. Follow the remaining prompts until you reach the InstallShield Wizard Completed page, and click **Finish**.

Repairing the GRAMS Converters

If you run the GRAMS Converters Package InstallShield Wizard on a system where the converters have already been installed successfully, you can use the **Repair** option to reinstall all the GRAMS converters in the package.

To repair the GRAMS Converters:

1. From the Envision installation kit, locate and run **GRAMS Converters Package.msi**.

Depending on your security settings, one or more security warnings or confirmation dialog boxes may appear.

2. The GRAMS Converters Package InstallShield Wizard starts:
 - a. **Welcome**
This screen appears when the wizard is ready to start the installation. Click **Next** to continue.
 - b. **Program Maintenance**
Select **Repair** to repair your GRAMS converters, and click **Next** to continue.
 - c. **Ready to Repair the Program**
At this point, the wizard has all the information it requires to proceed with the repair. Click **Install** to repair your GRAMS converters.
 - d. **Installing GRAMS Converters Package**
This screen includes a progress bar, indicating the progress of the installation.
 - e. **InstallShield Wizard Completed**
Click **Finish** to close the wizard.

Uninstalling the GRAMS Converters

If you run the GRAMS Converters Package InstallShield Wizard on a computer where the converters have already been installed successfully, you can use the **Remove** option to uninstall all GRAMS converters in the package.

To uninstall the GRAMS converters package:

1. From the Envision installation kit, locate and run **GRAMS Converters Package.msi**.

Depending on your security settings, one or more security warnings or confirmation dialog boxes may appear.

2. The GRAMS Converters Package InstallShield Wizard opens:

- a. **Welcome**

This screen appears when the wizard is ready to start the installation. Click **Next** to continue.

- b. **Program Maintenance**

Select **Remove** to remove your GRAMS converters, and click **Next** to continue.

- c. **Remove the Program**

At this point, the wizard has all the information it needs to proceed with removing the GRAMS converters. Click **Remove** to uninstall the GRAMS converters.

- d. **Uninstalling GRAMS Converters Package**

This screen includes a progress bar, indicating the progress of the uninstallation process.

Note Clicking **Cancel** stops the uninstall process, and returns your GRAMS Converters package to its original state. ▲

- e. **InstallShield Wizard Completed**

Click **Finish** to close the wizard.

Notes